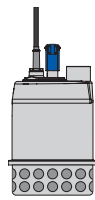
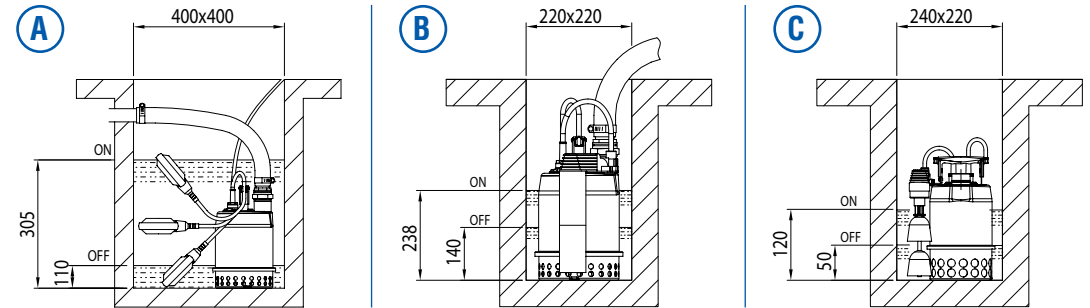
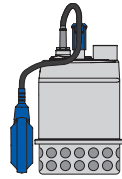


BEST ONE

Selection table



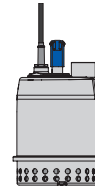
BEST ONE VOX



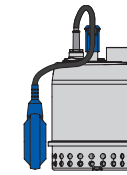
BEST ONE VOX MA



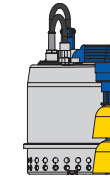
BEST ONE MW



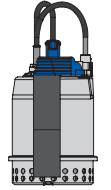
BEST ONE M



BEST ONE MA



BEST ONE AGMA



BEST ONE MS

	BEST ONE VOX	BEST ONE VOX MA	BEST ONE MW	BEST ONE M	BEST ONE MA	BEST ONE AGMA	BEST ONE MS
Technical Data							
Max temperature of the liquid	50° C	50° C	50° C	50° C	50° C	50° C	50° C
Cable length	10 m	10 m	10 m	10 m	10 m	10 m	5 m
Max starts per hour	30	30	30	30	30	30	30
Max immersion	5 m	5 m	5 m	5 m	5 m	5 m	2 m
Mechanical seal	Carbon/Ceramic/NBR	Carbon/Ceramic/NBR	Carbon/Ceramic/NBR	Carbon/Ceramic/NBR	Carbon/Ceramic/NBR	Carbon/Ceramic/NBR	Carbon/Ceramic/NBR
Dimensions							
Dimensional drawing	-	A	C	-	A	C	B
Float Activation Range	-	110-330 mm	50-120 mm	-	110 - 305 mm	50-120 mm	140-238 mm
Strainer Size	20 mm	20 mm	20 mm	10 mm	10 mm	10 mm	10 mm
Max Solid Size	20 mm	20 mm	20 mm	10 mm	10 mm	10 mm	10 mm
Weight [Kg]	4,4 Kg	4,5 Kg	4,7 Kg	4,4 Kg	4,6 Kg	4,7 Kg	4,8 Kg
Sump							
Width 220-400 mm	✗	✓	✓	✗	✗	✓	✓
Width +400 mm	✓	✗	✗	✓	✓	✗	✗

Applications

Draining basements, garages, cellars or places subject to flooding
Easy emptying of tanks and reservoirs *

Clear water applications only *

* If any Silt/Debris present additional maintenance will be required